

Spatula Demo

Materials:

4/4" hardwood of your choice 3 – 4" x 10 – 12"

Finish:

Food-safe oil of your choice, I like Mahoney's walnut oil but mineral oil or butcher block oil will do too.

Tools:

1/2" bowl gouge

3/8" or 1/2" spindle gouge

1/2" skew chisel (optional)

Small screw clamp (Jorgenson type)

Cloth backed sandpaper – 150, 220

Sanding drum (see end of handout)

Bandsaw

1. Mark center of each end of blank and mount on lathe with handle end toward headstock. Use a template (or estimate) to mark where working end of spatula will be and how long the handle grip area will be.



2. Using the bowl gouge, begin turning area between handle shaft and spatula end of blank.

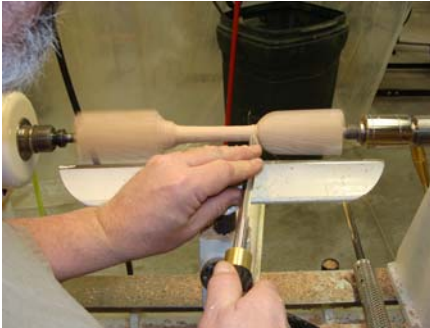


3. Continue turning until neck of shaft is smaller in diameter than thickness of blank. This will help later on when sanding the spatula flats. Second picture shows just a small bit of flat. Turn spatula area until flats on edges of spatula are completely

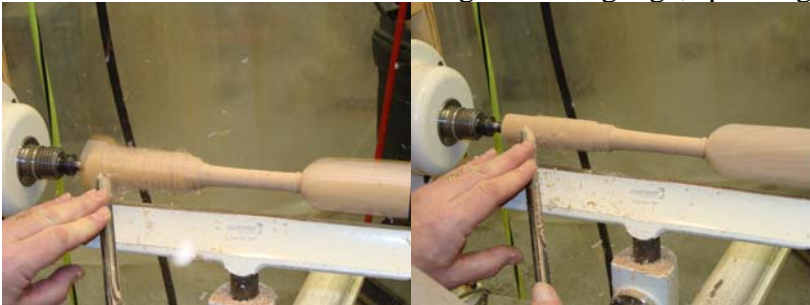
gone. And transition between spatula and shaft are nice and curved. Optional: make a very light pass with a skew chisel to put a very clean surface on edge of spatula.



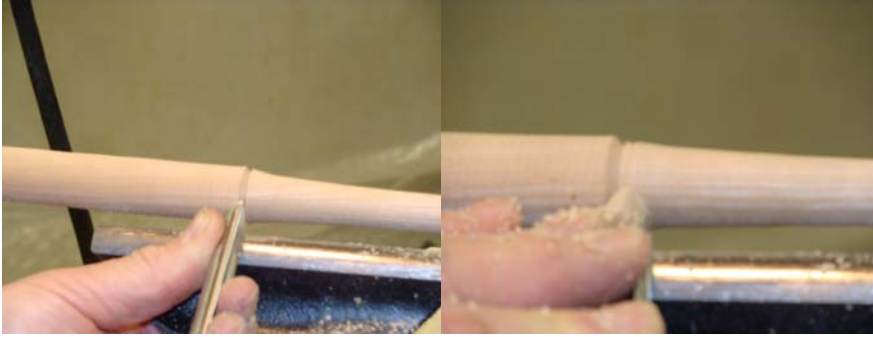
4. Using a spindle gouge do any decorating on the area between spatula and shaft at this time. You can make a bead, cove, groove, or just leave it smooth. Use the bowl gouge to continue reducing the shaft area toward the grip end to round, and blend with the transition to the spatula end of project. The skew will make a very clean surface, but isn't absolutely necessary.



5. Turn handle area round using the bowl gouge, spindle gouge or skew chisel.



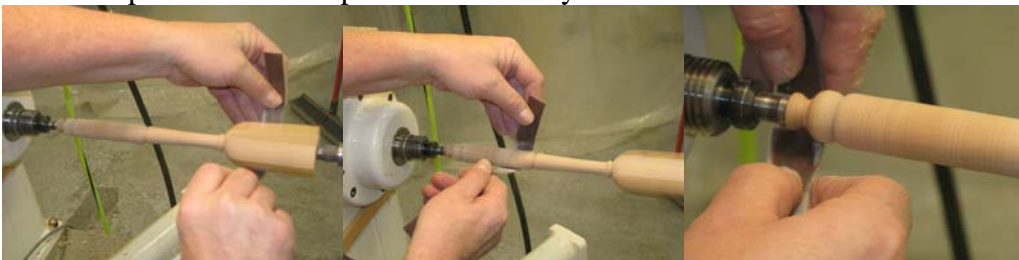
6. Once round and sized to your desire, use the spindle gouge or skew chisel to do any decoration to the transition area between grip and shaft area.



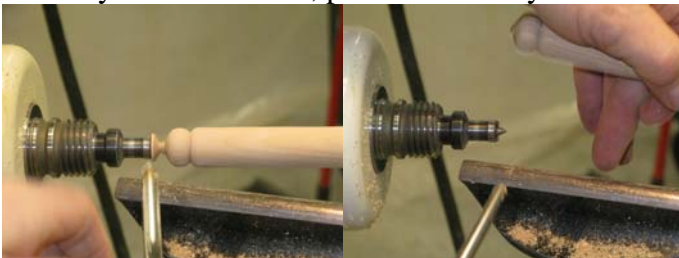
7. Do decorations at very end of grip area. Begin cutting the very end so as to allow as much sanding as you can, but don't part off yet. Leave enough wood to support the spatula project during sanding. Again, no decorations are needed, but they add to the look of the project.



8. Sand using a narrow strip of cloth-backed sandpaper. Be careful of your hand and finger placement when you are sanding on or near the working spatula area. Grit depends on the shape of the surface you've left.



9. Once the entire shaft, decorations, and edges of the spatula area are sanded to your satisfaction, part off carefully.



10. Hand sand the end of the shaft.

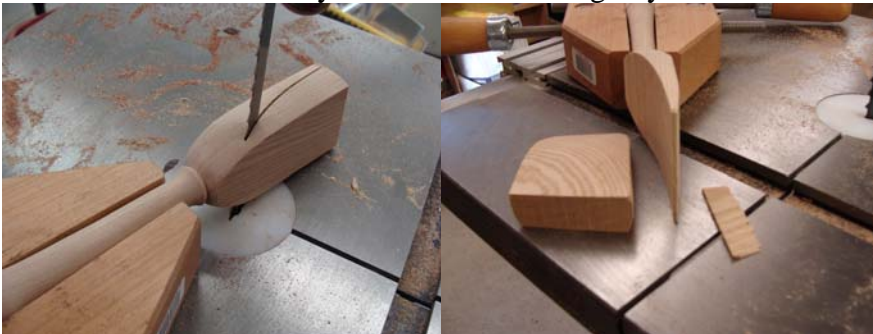
11. With spatula flat on table, cut the end of the spatula at a skew, straight across, or into a curve, being sure to remove the hole from the live center.



12. Go to the bandsaw and grip the handle/shaft area with a hand-screw clamp with the spatula end free of the clamp and 90 degrees to the bandsaw blade. Tighten clamp in this position.



13. Cut the desired profile with the bandsaw. It can be a wedge shape, or it can be curved in one way or another according to your desire.



14. Sand away bandsaw marks with a drum sander, belt sander, oscillating spindle sander or on your lathe with a home-made sanding drum. Be sure to sand end of spatula too, as shown in second picture. Try and blend the sides to the end slightly to prevent the corners from being too fragile.



15. Finish with the food-safe oil finish of your choice. Follow the instructions for your own particular finish.

